

THORNTON

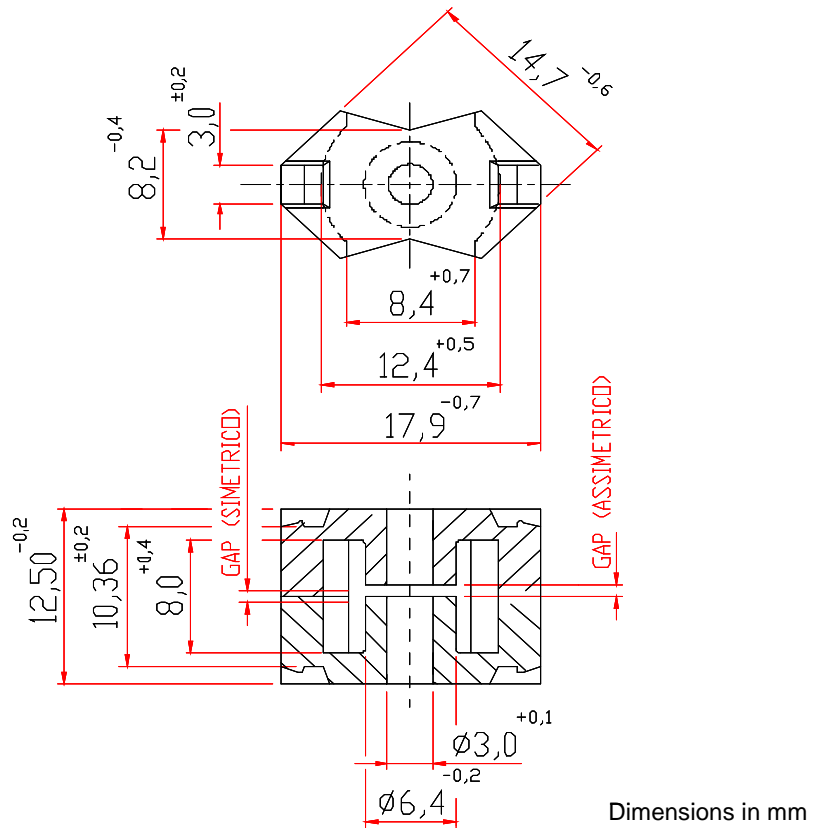
Thornton
Eletrônica Ltda

NRM-6S (with hole)

Effective Core Parameters:

$\Sigma I/A$	0,86	mm ⁻¹
Le	27,0	mm
Ae	31,0	mm ²
Amin	- - -	mm ²
Ve	840,0	mm ³

Weight Approx. (piece) 2,3 g



Dimensions in mm

WITH GAP

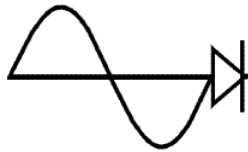
DESCRIPTION ORDER	MATERIAL	Al [nH]	Tol. %	~g [mm]	~ µe
NRM-6S-40-IP6 (with hole)	IP6	40	±3	*1,100	27
NRM-6S-60-IP6 (with hole)	IP6	60	±3	*0,820	41
NRM-6S-89-IP6 (with hole)	IP6	89	±3	*0,470	61
NRM-6S-100-IP6 (with hole)	IP6	100	±3	0,390	68
NRM-6S-160-IP6 (with hole)	IP6	160	±3	0,220	109
NRM-6S-160-IP12R (with hole)	IP12R	160	±3	0,220	109
NRM-6S-200-IP6 (with hole)	IP6	200	±3	0,170	137
NRM-6S-250-IP6 (with hole)	IP6	250	±3	0,120	171
NRM-6S-250-IP612 (with hole)	IP612	250	±3	0,120	171
NRM-6S-300-IP6 (with hole)	IP6	300	±3	0,100	205
NRM-6S-315-IP6 (with hole)	IP6	315	±3	0,080	215
NRM-6S-400-IP6 (with hole)	IP6	400	±3	0,060	274
NRM-6S-460-IP6 (with hole)	IP6	460	±3	0,050	314
NRM-6S-500-IP6 (with hole)	IP6	500	±3	0,050	342
NRM-6S-630-IP6 (with hole)	IP6	630	±10	0,030	431
NRM-6S-800-IP6 (with hole)	IP6	800	±10	0,020	547
NRM-6S-1000-IP6 (with hole)	IP6	1000	±10	0,015	684
NRM-6S-1250-IP6 (with hole)	IP6	1250	±10	0,010	855

* Simetrical gap

WITHOUT GAP

DESCRIPTION ORDER	MATERIAL	Al [nH]	Tol. %	~g [mm]	~ µe
NRM-6S-2000-IP6 (with hole)	IP6	2000	+30 / -20	- - -	1368
NRM-6S-2000-IP612 (with hole)	IP612	2000	+30 / -20	- - -	1368
NRM-6S-4000-TH50 (with hole)	TH50	4000	+30 / -20	- - -	2736
NRM-6S-5000-TH50 (with hole)	TH50	5000	+30 / -20	- - -	3421

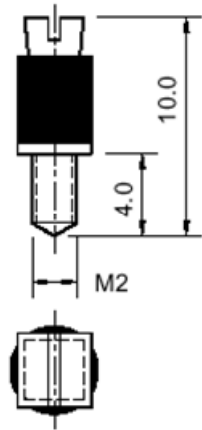
Others AL's by consulting



THORNTON

Thornton
Eletrônica Ltda

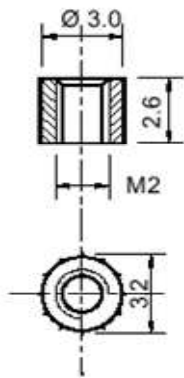
ACCESSORIES - NRM-6S (with hole)



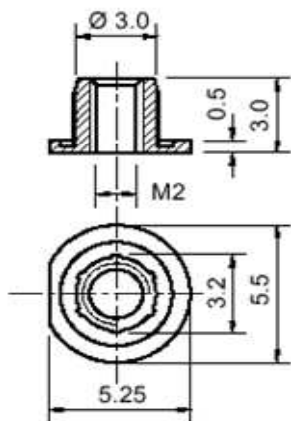
ADJUSTING SCREW

DESCRIPTION ORDER	MATERIAL	WEIGHT ~ [g]
PA - 3 / 3,5 - IP 6	Polyacetal	0,110

Dimensions em mm



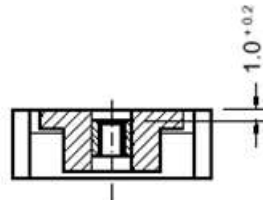
Without Flange



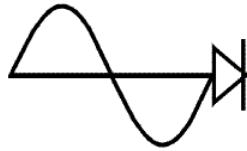
With Flange

NUT

DESCRIPTION ORDER	MATERIAL	WEIGHT ~ [g]
a) PO - 3/3 - S/F - POM	Polyacetal	0,014
b) PO - 3/3 - C/F - POM	Polyacetal	0,029



Dimensions em mm

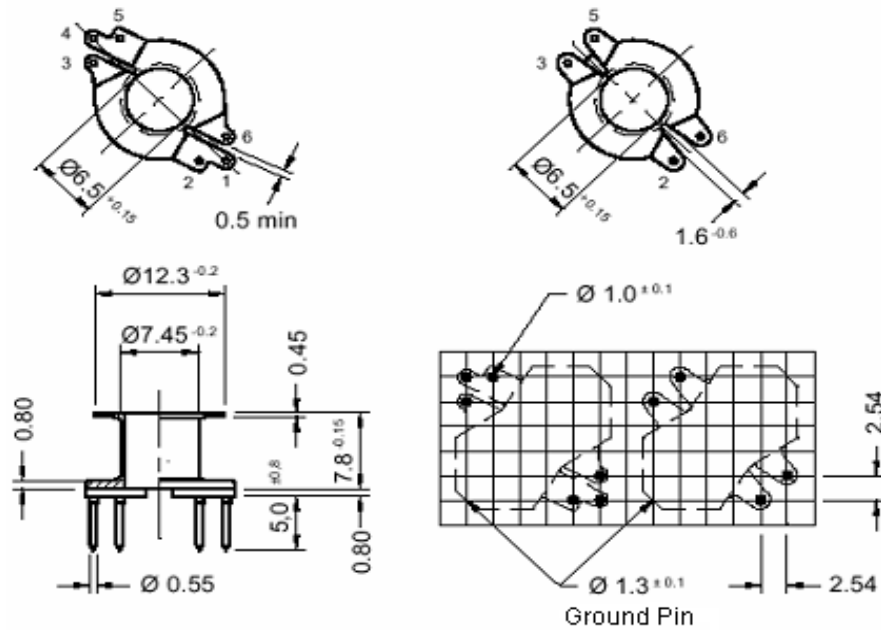


THORNTON

Thornton
Eletrônica Ltda

ACCESSORIES - NRM-6S (with hole)

COIL FORMER

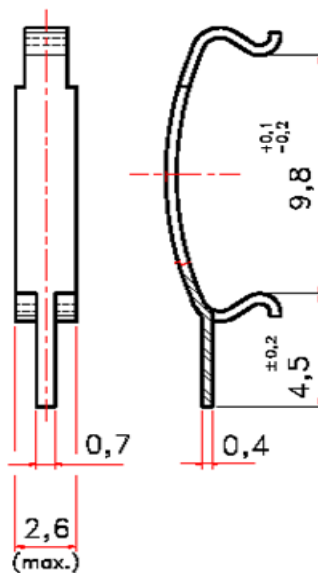


Maximum soldering temperature is 400°C for 2 seconds

Dimensions em mm

DESCRIPTION ORDER	WINDOW [mm ²]	Nº OF SECTIONS	Nº DE TERMINALS	MEAN LENGTH [mm/turn]	WEIGHT ~ g [mm]	MATERIAL
C-RM-6S-1/4-BAQ	15,00	1	4	30,00	0,40	Bakelite
C-RM-6S-1/6-BAQ	15,00	1	6	30,00	0,40	Bakelite

CLAMP



Dimensions em mm

DESCRIPTION ORDER	WEIGHT ~ g	MATERIAL
G - RM - 6S	0,12	TP Spring Steel