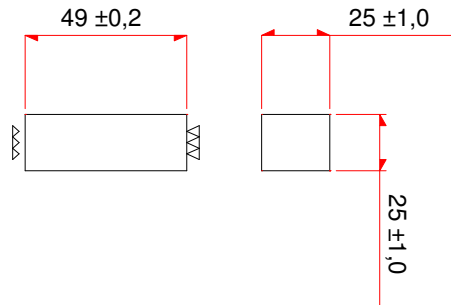


NI-49/25/25



Weight Approx. (piece) 150 g

Dimensions in mm

DESCRIPTION ORDER	MATERIAL	Al [nH]	Tol. %	~g [mm]	~ μe
NI-49/25/25-IP12E	IP12E	---	---	---	---

Option of mounting being 1, 2 or 3 NI-49/25/25 with that of NC-100/57/25

