

THORNTON

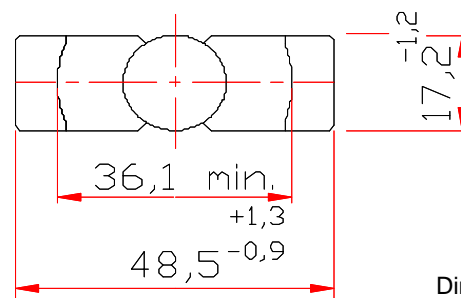
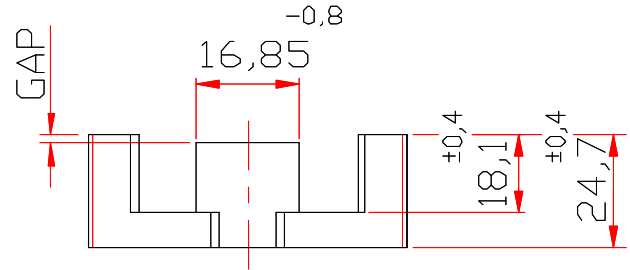
Thornton
Eletrônica Ltda

NETD-49/25/17

Effective Core Parameters:

S I/A	0,535	mm ⁻¹
Le	114	mm
Ae	213,07	mm ²
Amin	---	mm ²
Ve	24290	mm ³

Weight Approx. (piece) 65,0 g



Dimensions in mm

WITH GAP

DESCRIPTION ORDER	MATERIAL	Al [nH]	Tol.%	~g [mm]	~ μe
NETD-49/25/17-232-IP12E	IP12E	232	± 10	1,4	98,7
NETD-49/25/17-232-IP12R	IP12R	232	± 10	1,4	98,7
NETD-49/25/17-266-IP12E	IP12E	266	± 5	1,25	113
NETD-49/25/17-266-IP12R	IP12R	266	± 5	1,25	113
NETD-49/25/17-458-IP12E	IP12E	458	± 10	0,6	194

WITHOUT GAP

DESCRIPTION ORDER	MATERIAL	Al [nH]	Tol.%	~g [mm]	~ μe
NETD-49/25/17-4000-IP12E	IP12E	4000	± 25	---	1702
NETD-49/25/17-4000-IP12R	IP12R	4000	± 25	---	1702

Others AL's by consulting