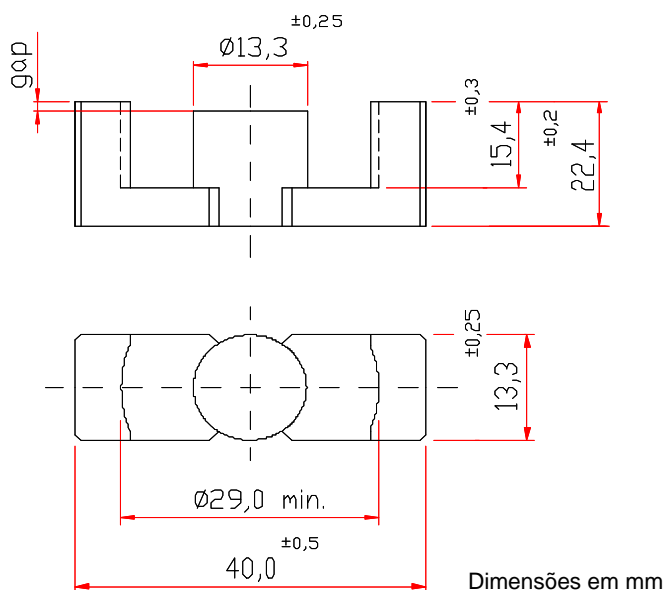


NER-40/22/13

Parâmetros Efetivos do Núcleo:

S I/A	0,659	mm ⁻¹
Le	98,0	mm
Ae	149,0	mm ²
Amin	- - -	mm ²
Ve	14600,0	mm ³

Peso Aprox. (pç) 39,0 g



COM GAP

DESCRIÇÃO DE ENCOMENDA	MATERIAL	Al [nH]	Tol.%	~g [mm]	~ µe
NEER-40/22/13-100-IP12R	IP12R	100	± 8	*1,5	52,5
NEER-40/22/13-167-IP12E	IP12E	167	± 8	1,41	87,5
NEER-40/22/13-175-IP12R	IP12R	175	± 8	1,30	91,7
NEER-40/22/13-240-IP12R	IP12R	240	± 8	1,0	126
NEER-40/22/13-250-IP12R	IP12R	250	± 10	0,9	131
NEER-40/22/13-290-IP12R	IP12R	290	± 10	0,8	152

* gap Simétrico

SEM GAP

DESCRIÇÃO DE ENCOMENDA	MATERIAL	Al [nH]	Tol.%	~g [mm]	~ µe
NEER-40/22/13-3200-IP12R	IP12R	3200	+30 / -20	- - -	1678
NEER-40/22/13-3200-IP6	IP6	3200	+30 / -20	- - -	1678

Outros Al's mediante consulta