

**THORNTON**

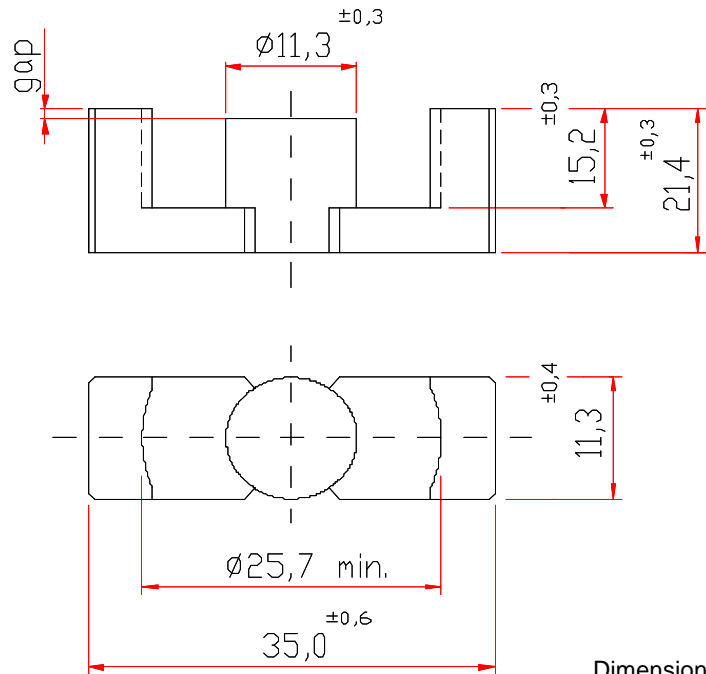
Thornton  
Eletrônica Ltda

**NER-35/21,6/11**

**Effective Core Parameters:**

<b>S I/A</b>	0,851	mm <sup>-1</sup>
<b>Le</b>	90,8	mm
<b>Ae</b>	107,0	mm <sup>2</sup>
<b>Amin</b>	- - -	mm <sup>2</sup>
<b>Ve</b>	9715,0	mm <sup>3</sup>

Weight Approx. (piece) 24,8 g



Dimensions in mm

**WITH GAP**

DESCRIPTION ORDER	MATERIAL	Al [nH]	Tol.%	~g [mm]	~ μe
NEER-35/21,6/11-160-IP12R	IP12R	160	± 9	1,05	108
NEER-35/21,6/11-180-IP12R	IP12R	180	± 7	0,90	122
NEER-35/21,6/11-236-IP12R	IP12R	236	± 10	0,80	160
NEER-35/21,6/11-280-IP12R	IP12R	280	± 10	0,45	190
NEER-35/21,6/11-500-IP12R	IP12R	500	± 15	0,20	339

**WITHOUT GAP**

DESCRIPTION ORDER	MATERIAL	Al [nH]	Tol.%	~g [mm]	~ μe
NEER-35/21,6/11-2700-IP12R	IP12R	2700	± 25	- - -	1828

Others AL's by consulting