

THORNTON

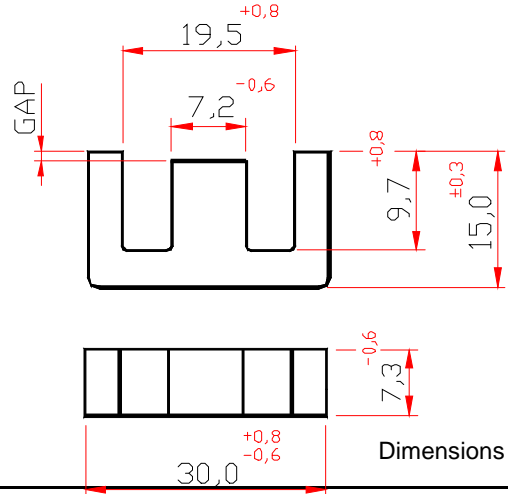
Thornton
Eletrônica Ltda

NEE-30/15/7

Effective Core Parameters:

$\Sigma I/A$	1,12	mm ⁻¹
Le	67,0	mm
Ae	60,0	mm ²
Amin	49,0	mm ²
Ve	4000,0	mm ³

Weight Approx. (piece) 10,10 g



WITH GAP

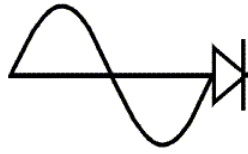
DESCRIPTION ORDER	MATERIAL	Al [nH]	Tol. %	~g [mm]	~ μe
NEE-30/15/7-40-IP12R	IP12R	40	±7	*2,50	35
NEE-30/15/7-50-IP12R	IP12R	50	±10	*2,40	44
NEE-30/15/7-60-IP6	IP6	60	±10	1,90	53
NEE-30/15/7-60-IP12R	IP12R	60	±10	1,90	53
NEE-30/15/7-70-IP12R	IP12R	70	±7	1,50	62,4
NEE-30/15/7-70-IP12E	IP12E	70	±7	1,50	62,4
NEE-30/15/7-86-IP12R	IP12R	86	±10	1,05	76,6
NEE-30/15/7-100-IP6	IP6	100	±10	1,00	89
NEE-30/15/7-100-IP12R	IP12R	100	±10	1,00	89
NEE-30/15/7-120-IP6	IP6	120	±10	0,80	107
NEE-30/15/7-120-IP12R	IP12R	120	±10	0,80	107
NEE-30/15/7-126-IP12R	IP12R	126	±10	0,73	112
NEE-30/15/7-160-IP12R	IP12R	160	±10	0,45	142
NEE-30/15/7-160-IP12R	IP12R	160	±10	0,45	142
NEE-30/15/7-168-IP12R	IP12R	168	±10	0,40	149,7
NEE-30/15/7-170-IP12R	IP12R	170	±10	0,39	151
NEE-30/15/7-200-IP6	IP6	200	±15	0,35	178
NEE-30/15/7-200-IP12R	IP12R	200	±15	0,35	178
NEE-30/15/7-210-IP6	IP6	210	±15	0,33	187
NEE-30/15/7-210-IP12R	IP12R	210	±15	0,33	187
NEE-30/15/7-230-IP12R	IP12R	230	±15	0,3	204
NEE-30/15/7-250-IP6	IP6	250	±15	0,25	223
NEE-30/15/7-250-IP12R	IP12R	250	±15	0,25	223
NEE-30/15/7-300-IP6	IP6	300	±15	0,23	267
NEE-30/15/7-310-IP6	IP6	310	±15	0,22	276
NEE-30/15/7-310-IP12R	IP12R	310	±15	0,22	276
NEE-30/15/7-330-IP12R	IP12R	330	±15	0,21	294
NEE-30/15/7-375-IP12R	IP12R	375	±20	0,20	334
NEE-30/15/7-400-IP6	IP6	400	±20	0,18	356
NEE-30/15/7-400-IP12R	IP12R	400	±20	0,18	356

* Simetrical gap

WITHOUT GAP

DESCRIPTION ORDER	MATERIAL	Al [nH]	Tol. %	~g [mm]	~ μe
NEE-30/15/7-1800-IP6	IP6	1800	+30 / -20	---	1604
NEE-30/15/7-1800-IP12R	IP12R	1800	+30 / -20	---	1604
NEE-30/15/7-1800-IP12E	IP12E	1800	+30 / -20	---	1604

Others AL's by consulting

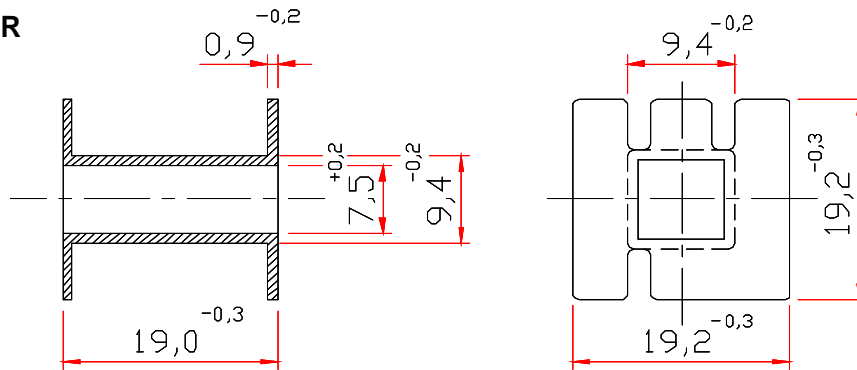


THORNTON

Thornton
Eletrônica Ltda

ACCESSORIES - NEE-30/15/7

COIL FORMER



Dimensions em mm

DESCRIPTION ORDER	NUMBER OF SECTIONS	WINDOW [mm ²]	MEAN LENGTH [mm/turn]	WEIGHT ~ g [mm]	MATERIAL
CE-30/15/7-1/0-POM	1	80,00	56,00	1,20	Poliacetal