

**THORNTON**

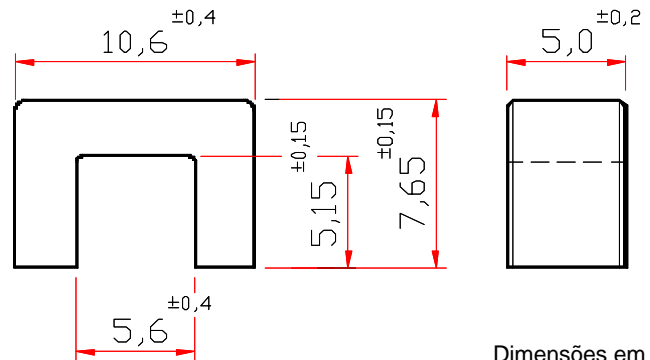
Thornton  
Eletrônica Ltda

**NC-11/7/5**

**Parâmetros Efetivos do Núcleo:**

<b>S I/A</b>	3,172	mm <sup>-1</sup>
<b>Le</b>	39,65	mm
<b>Ae</b>	12,50	mm <sup>2</sup>
<b>Amin</b>	---	mm <sup>2</sup>
<b>Ve</b>	495,67	mm <sup>3</sup>

Peso Aprox. (pç) 1,20 g



**SEM GAP**

DESCRIÇÃO DE ENCOMENDA	MATERIAL	Al [nH]	Tol. %	~g [mm]	~ µe
NC-11/7/5-530-IP6	IP6	530	+30 / -20	---	1324
NC-11/7/5-1000-TH50	TH50	1000	+30 / -20	---	2498

[Outros Al's mediante consulta](#)