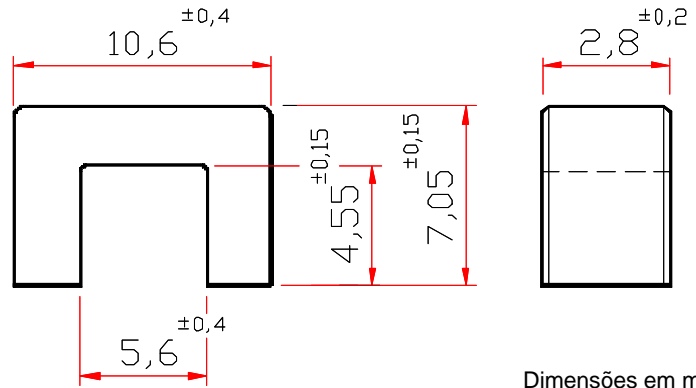
**THORNTON**Thornton
Eletrônica Ltda**NC-11/7,2/3****Parâmetros Efetivos do Núcleo:**

S I/A	5,322	mm ⁻¹
Le	37,25	mm
Ae	7,00	mm ²
Amin	- - -	mm ²
Ve	260,77	mm ³

Peso Aprox. (pç) 0,75 g

**SEM GAP**

DESCRIÇÃO DE ENCOMENDA	MATERIAL	Al [nH]	Tol.%	~g [mm]	~ µe
NC-11/7,2/3-350-IP6	IP6	350	+30 / -20	- - -	1306
NC-11/7,2/3-350-IP12R	IP12R	350	+30 / -20	- - -	1306
NC-11/7,2/3-560-TH50	TH50	560	+50 / -20	- - -	2089
NC-11/7,2/3-880-TH50	TH50	880	+30 / -20	- - -	3283

[Outros Al's mediante consulta](#)